

**MANSAFE ANCHOR SYSTEM**

Install BÖRNER Vapour Control Layer, PIR Insulation, Specified BÖRNER Underlay (Field) and Cap Sheet to the roof area as outlined in the specification.

Install mansafe anchor system base plate through the waterproofing system mechanically fixed to the deck in strict accordance with the manufacturer's instructions, using the correct fixing method.

Prepare and prime the base plate with the specified BÖRNER PRIME COATING.

Apply the specified waterproofing detailing fully bonded to the detail, sealed onto the base plate, lapped and fully sealed onto the main area as indicated.

**NOTES:**

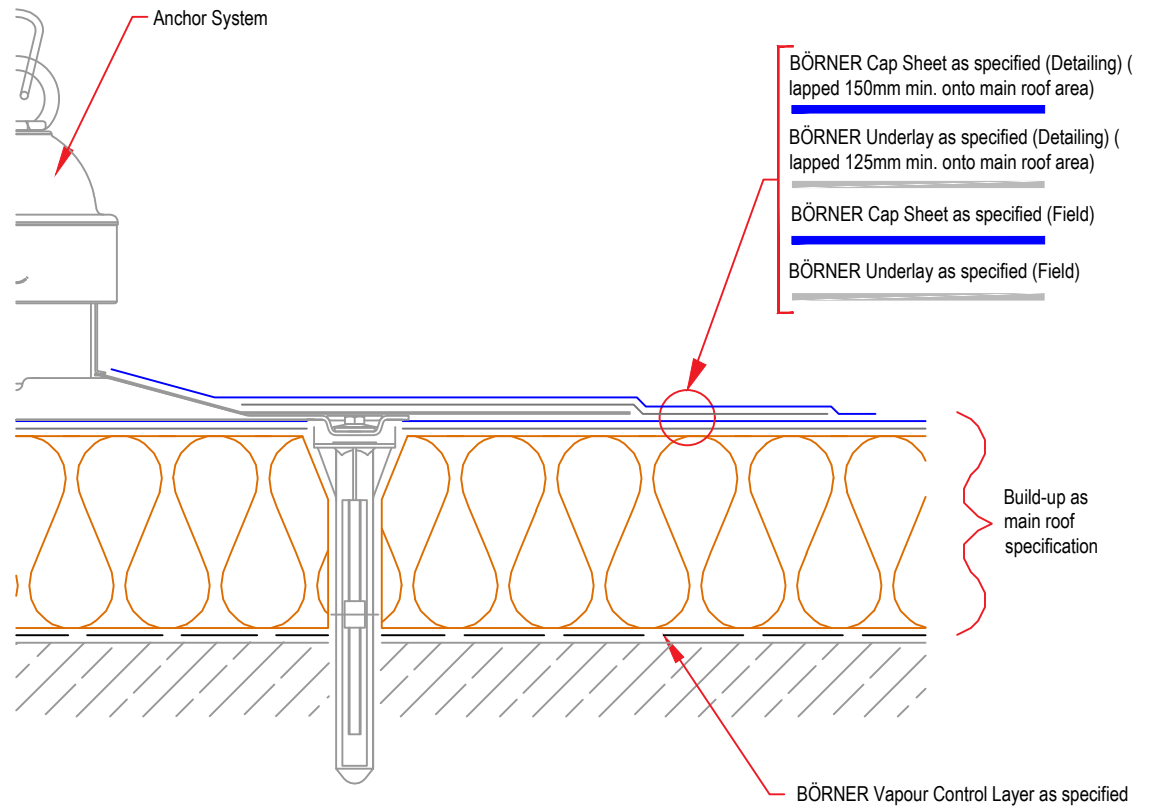
Installation and testing of mansafe anchor systems must be carried out by trained and qualified personnel in strict accordance with the manufacturer's installation instructions using the correct fixing methods. Application of the waterproofing detail must be carried out by the BÖRNER Approved Contractor by appropriately trained operatives.

All details to be installed in accordance with BS8217, BS6229, and BÖRNER recommendations.

All waterproofing detailing must be undertaken as two layers and as separate items.

All surfaces must be clean, dry, and suitably prepared to accept the waterproofing system.

During the application of all bitumen membranes a visible bead of bitumen must be exuded from all side and end laps.



Copyright Reserved - Please note that this drawing & the copyright therein is the property of BÖRNER & is issued on the understanding that the drawing or any detail thereof will not be divulged to a third party unless written permission is first obtained from BÖRNER technical services department. The drawing is valid only when approved by the Architect / Contractor concerned.

This detail is representative of a typical situation and provided for illustration purposes. Insulation thickness shown may differ in accordance with specifiers U value requirement.

**Standard  
Detail**

Drawing Title:

**Mansafe Anchor System**

Date:  
2018

Notes / Revisions:

Drawing No.

**F7**

Scale:  
NTS

Drawn By:  
BÖRNER



BÖRNER. Systematically sealed.

Email: [info@borner.ie](mailto:info@borner.ie)